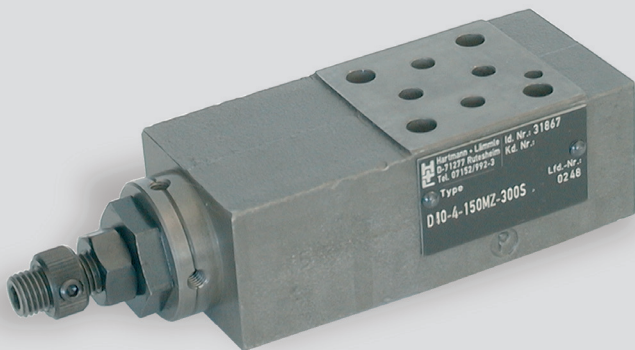


Pressure-Relief Valve NG 4 ISO 4401, sandwich-plate



- damped piston valve
- small hysteresis
- compact design

Technical Data

General

Symbol	please see symbol diagram
Type of valve	direct controlled piston valve
Mounting method	sandwich plate
Mounting positions	mountable in any positions
Ambient temperature	-5 to +50 °C
Mass valve	0.6 kg

Hydraulic

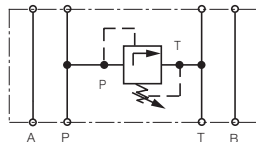
Operation pressure max.	315 bar
Operation pressure range	
Ports A, B	3 - 30; 5 - 60; 10 - 150 or 20 - 250; 30 - 315
Hydraulic oil temperature	-5 to +70 °C
Viscosity range	10 to 300 mm ² /s
Operating flow range	see characteristic curve

Options

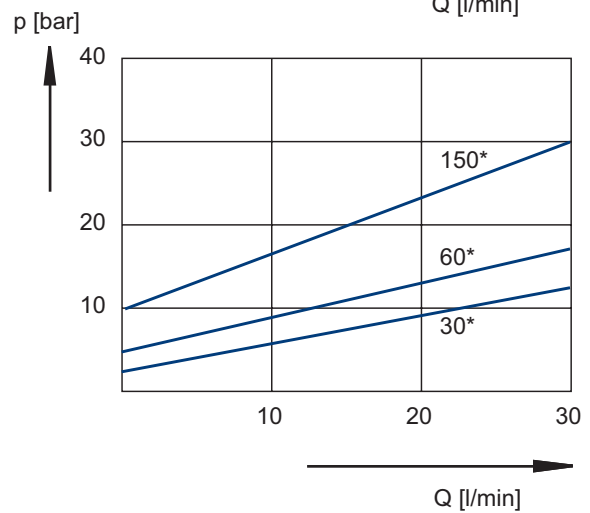
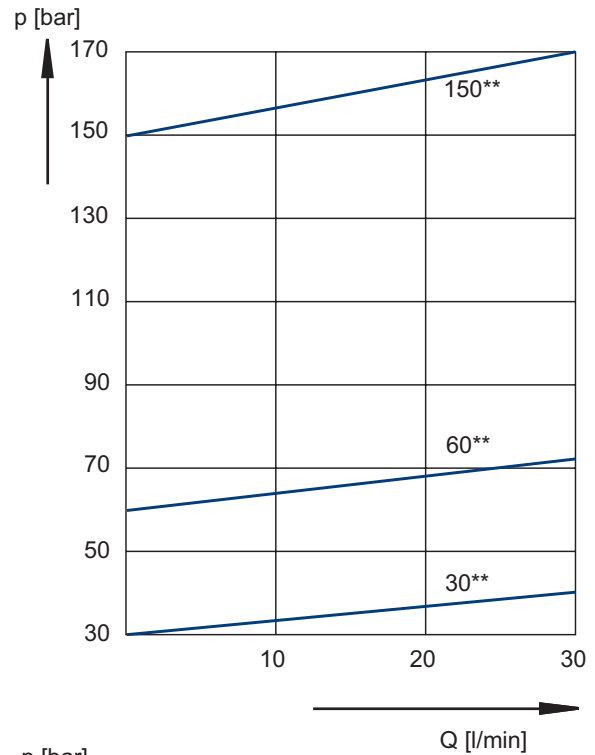
- measuring connection 1/8"
- different adjustment method

Symbol

10



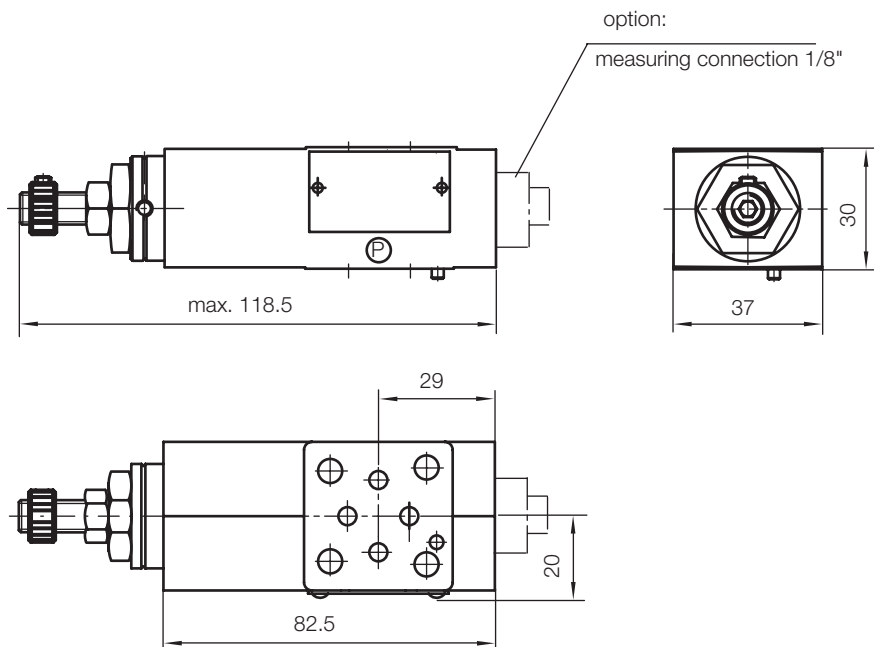
Characterstic curve



* = min. adjustable pressure

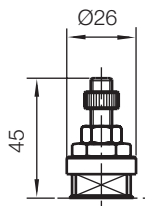
** = max. adjustable pressure

Dimensional Drawing

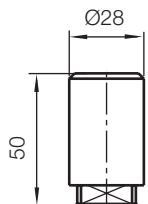


Adjustment Methods

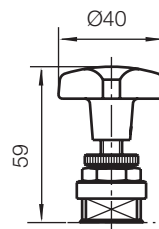
design S
S = setting screw



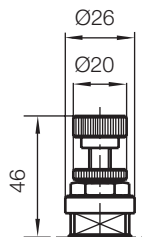
design K; P
K = cover
P = cover with lead seal



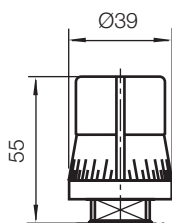
design G
G = star knob



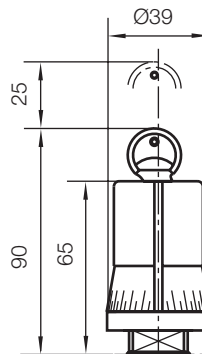
design H
H = handwheel



design D
D = rotary knob

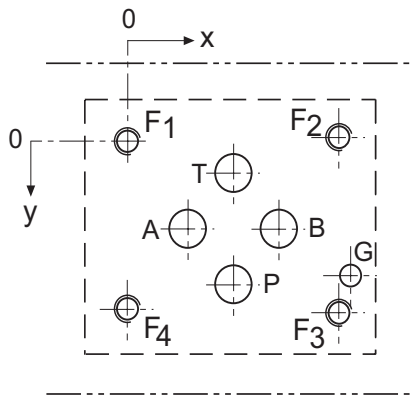


design V
V = rotary knob and lock



all dimensions in mm

Port Connection Pattern NG 4 ISO 4401



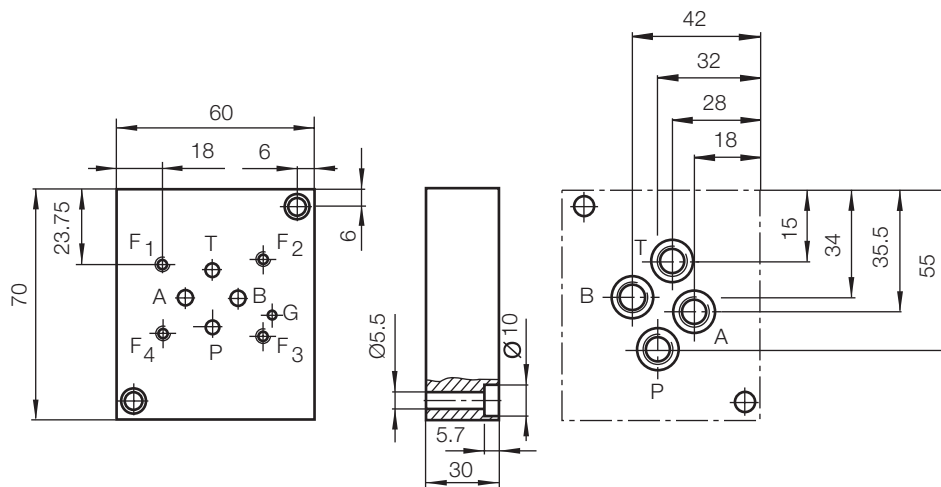
view: fastening side of mounting plate

	P	A	T	B	F1	F2	F3	F4	G
Ø max [mm]	4.5	4.5	4.5	4.5	-	-	-	-	3.4
x [mm]	12	4.3	12	19.7	0	24	24	0	26.5
y [mm]	20.25	11.25	2.25	11.25	0	-0.75	23.25	22.5	17.75

F: M5, thread depth min. 1.5 x Ø

G: bore hole depth min. 1.5 x Ø

Single-Unit Mounting Plate



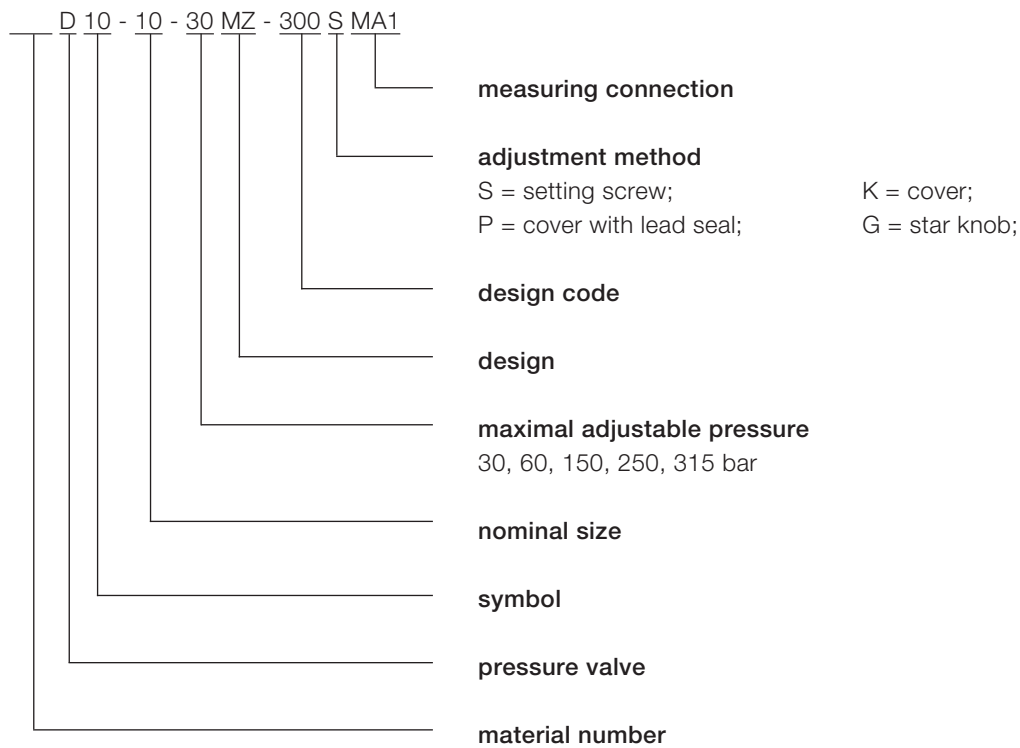
Order number single-unit mounting plate:

PW4M-G1-400, pipe connections R1/8"

PW4M-G2-400, pipe connections R1/4"

Multiple-unit mounting plate on request.

Type Code



Voith Turbo H + L Hydraulic GmbH & Co. KG
Schuckertstraße 15
71277 Rutesheim, Germany
Tel. +49 7152 992-3
Fax +49 7152 992-400
sales-rut@voith.com

voith.com



VOITH
Engineered Reliability